

LC302 Three Phase Meter



LC302- Three-phase, low voltage 3x230(400)V, electronic meter with advanced communicating capability for monitoring and managing the power network.

It measures active and reactive electric energy consumption and transmits data over the power network using two way **Power Line Communication (PLC)** to a central unit – concentrator – from which data is transmitted to the billing center by cellular communication – GSM/GPRS.

Features:

- IEC62053-21, Class 2 active energy, Optional: IEC62053-23 Class 2 reactive energy.
- 3x5(20)A, CT (current transformers) connection.
- Real two-way “A” band **Power Line Communication**.
- Measures and reports energy consumption in each phase separately.
- Measures and reports voltage level on each phase.
- Calculates consumption in accordance with **Time Of Use (TOU)** tariff table.
- Automatic calibration (NO physical adjustment).
- Repeats and amplifies signals transmitted by other distant units towards the concentrator over the power network – No distance limitation.
- Internal real time clock updated periodically by concentrator.
- Large two line 16 characters LCD Display
- LED consumption indication – 200pulses/kWh
- Non volatile **back-up memory**
- **IrDA** Optical port for reading
- Directly energized by power lines
- Simple and fast installation
- State of the art technology



LC302 Three Phase Meter



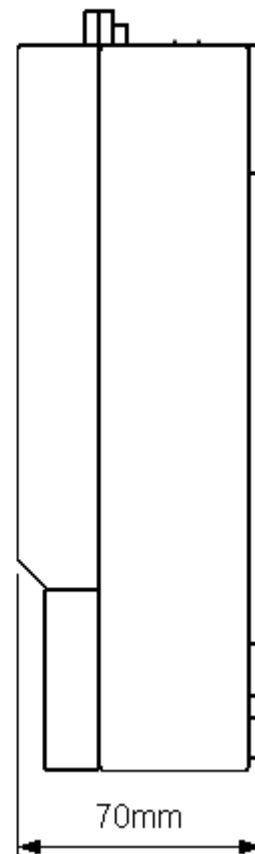
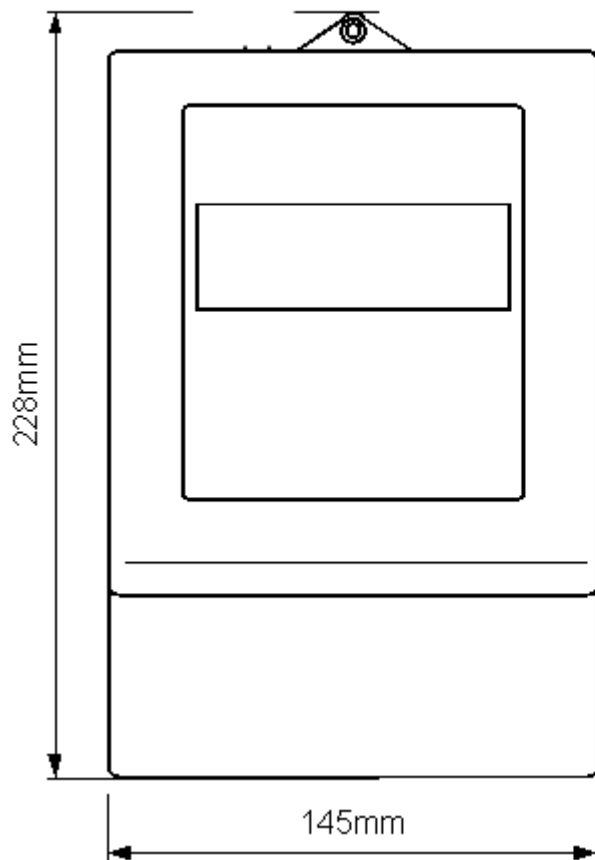
Technical Specifications

General	
Nominal Voltage (Un)	3 x 230V AC
Supply Voltage range	80% - 115% Un
Nominal Frequency (fn)	50Hz
Consumption at Un	5 W – 4.1 Var (Capacitive)
Measurement	
Class Index	
Active energy acc. to IEC62053-21	Class 2
Reactive energy acc. to IEC62053-23 (Optional)	Class 2
Basic Current (Ib)	3x5A
Maximum continuous current (Imax)	3x20A
Environmental	
Temperature range operation	-10°C to 55°C
storage	-25°C to 70°C
Protection rating	IP51
Insulation Strength	
Protective Class acc. to IEC62052-11	Class II
Display	
Type	LCD
Format	16 Characters x 2 Lines
Character size	9.55mm x 5.2mm
LED Indicator	
Flash rate (active energy consumption)	200 imp/kWh
Communication Interfaces	
PLC Frequency range	A-band 60-90 kHz
PLC Method	Spread FSK
Optical Comm. port IrDA baud rate	9600bps

LC302 Three Phase Meter



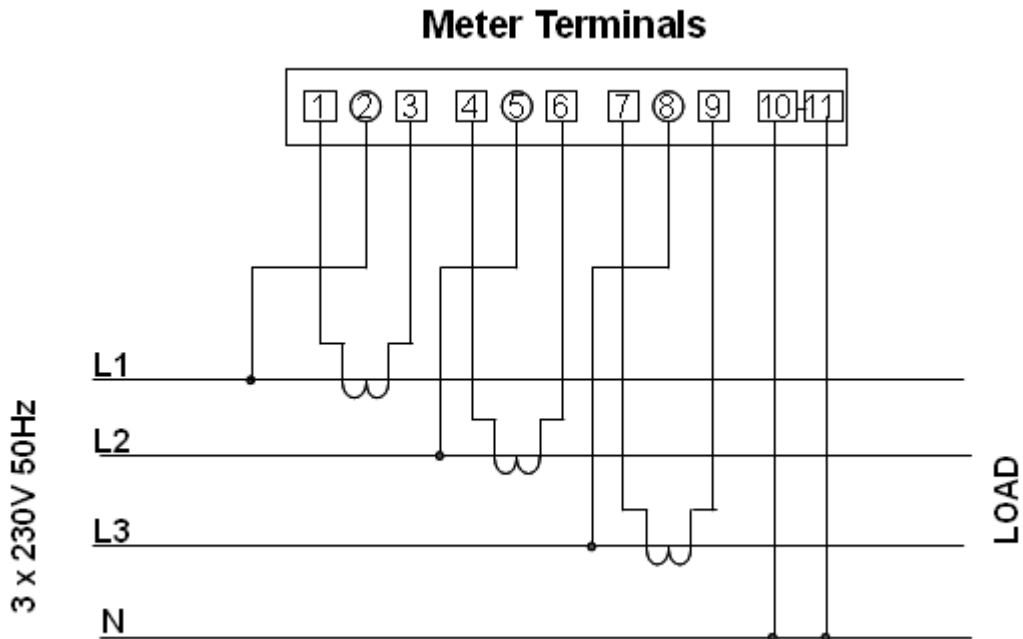
Weight/External Dimensions	
Weight	1300 g
Width	145 mm
Height	228 mm
Depth	70 mm



LC302 Three Phase Meter



Connections



Unique Technology (1993) Ltd

6 Hayozmim st. Or Yehuda, 60373 ,Israel Tel: + 972-3-6340889/99 Fax: +972-3-5330182

Info@collectric.net

www.collectric.net

The content of this brochure is presented as general information only and is not meant, nor does it, to constitute any representation or warranty by Unique Technology (1993) Ltd. It is not meant to serve or be used in substitution for the information contained in any approved specification, manual or the like issued by Unique Technology (1993) Ltd. It shall not in any way add to, amend, delete or change any term of any contract in which Unique Technology (1993) Ltd is a party.